

Sabaj

A4

Class-Amplifier

深圳市大号科技有限公司

安全注意事项

警告 避免高温

- 请将本音响系统安装在通风良好、阴凉、干燥、干净的位置，远离直射阳光热源、振动、灰尘、潮湿和/或寒冷。
- 避免将本机安装在异物容易掉落的地方，也要避免那些液体容易滴入或飞溅到的地方。本机的上面，请不要放置下列物品：
 - 其他装置。因为这样有可能会损坏和/或导致本机表面变色。
 - 可燃物品（例如蜡烛）。因为这样有可能导致火灾而损坏本机和/或造成人身伤害。
 - 装有液体的容器。因为有容器反倒，液体流淌的可能,如此有可能导致用户触电和/或损坏本机。
- 不要在本机上面覆盖报纸，台布，窗帘等，以免妨碍散热。如果本机内部温度过高，则有可能导致火灾，损坏本机和/或造成人身伤害。
- 只能使用本机指定的电压。使用高于指定数值的电压很危险，而且可能导致火灾，损坏本机，和/或造成人身伤害。对于使用高于指定电压造成的任何损害，深圳市大号科技有限公司将不负任何责任。
- 不要试图自行改造或修理本机。如果需要任何服务,请就近与有资格的深圳市大号科技有限公司维修人员联系。不管有任何理由，都没有打开机壳的必要。
- 如果打算长时间不使用本机（比如度假时），请从墙壁交流电源插座上断开电源线的连接。搬动本机前，请从墙壁电源插座上断开电源线的连接。
- 请务必使用本机附带的AC适配器。使用附带的AC适配器以外的适配器可能导致火灾或损害本机。
- 为了加强对于本产品的保护，在雷电期间，或无人管理时以及长时间不使用时，请将电源线从墙壁上的电源插座上拔下。这样将防止该产品在闪电和电网出现电涌时受到损害。

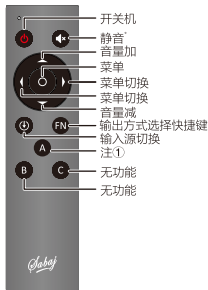
特点

- A4为多功能功率放大器具备五种输入方式
- 具有24位 USB数字输入
- 蓝牙采用高规格的蓝牙4.2方案
- 功放采用了美国TI公司高端DSP+大功率放大芯片
- 耳放采用了独立耳放电路
- 具有重低音信号输出

技术参数

输入方式:		USB/蓝牙/光纤/同轴/模拟(AUX)
THD+N:	功放	0.04%
	耳放	0.008%
信噪比:	功放	90dB
	耳放	100dB
USB兼容性:		windows XP/7/8/8.1/10;Mac OS X;Linux
位深:		24bit
最高采样率:	USB	96kHz
	光纤、同轴	192kHz
功放输出功率:		80W+80W(4欧)
耳放输出功率:		60mW+60mW(32欧)
消耗功率:		50W
待机功率:		0.5W

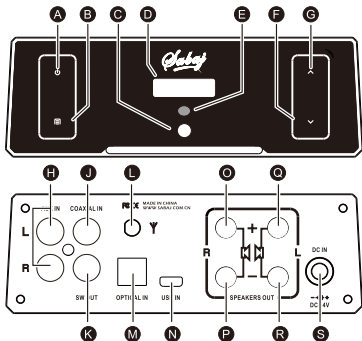
遥控器介绍



注:

- ①请在第一次使用A4时，先A键。
- ②静音键，在蓝牙输入时，按此键为连接上一次的蓝牙设备。

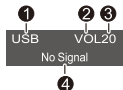
部件介绍



- A** 长按开/关机，短按输入源切换
- B** 菜单键
- C** 3.5mm输出接口
- D** 显示屏
- E** 遥控接收窗
- F** 音量减/功能切换
- G** 音量加/功能切换
- H** AUX输入接口
- J** 同轴输入接口

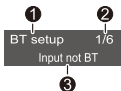
- K** 重低音输出接口
- L** 蓝牙天线接口
- M** 光纤输入接口
- N** USB输入接口
- O** 右声道输出正端
- P** 右声道输出负端
- Q** 左声道输出正端
- R** 左声道输出负端
- S** 电源输入接口(电压范围：直流19~24V)

主界面介绍



- 1、输入方式显示；
- 2、输出方式显示（VOL为功放输出，🔊为耳放输出）；
- 3、音量显示；
- 4、采样率显示（注：当启用静音时此处显示MUTING；当无信号输入时此处显示No signal）。

菜单显示介绍



- 1、当前菜单模式显示；
- 2、当前菜单页面位置；
- 3、当前菜单功能显示。

菜单功能介绍

- "BT setup"蓝牙设置菜单，当蓝牙已经连接有设备且用户想用其它设备连接机器时，可设置蓝牙断开原连接设备并进入配对状态（只功能只有在蓝牙输入状态下有效）。
- "Output"输出模式设置，有功放输出模式和耳放输出模式。
- "EQ mode"音效设置，分别是BASS,S-BASS,H-ROCK,L-ROCK,JAZZ,COUNTRY,RAP。
- "Bass"低音增益设置，增益调节范围为 ± 9 级。
- "Treble"高音增益设置，增益调节范围为 ± 9 级。
- "Dimmer"显示与氛围灯亮度调节和关闭屏幕，亮度调节范围为4级。

保修条款

一、服务期限

深圳市大号科技有限公司承诺产品的良好品质，产品自售出之后7天内正常使用情况下出现故障，客户可以选择退货或者保修（不影响二次销售才可退货）。正常使用一年内出现故障可以免费保修。

二、购买日期以销售商开出的购机发票或收据日期为准，多购可以交易截图为准。

三、有以下情况都不能享受“三包”服务

- 1.一切人为因素损坏，包括非正常工作环境下使用或不按照说明书使用；
- 2.用户私自拆机、改装、维修；
- 3.使用非指定或许可的配件造成损坏的；
- 4.机身的QC或保修贴损毁；
- 5.不能出示有效购机凭证；
- 6.不属于本公司产品。

四、保修方式为送修

此条款只适于中国大陆，其它地区请参考当地销售代理商的规定和国家法规。

Safety Notes

To assure the finest performance, please read this manual carefully. Keep it in a safe place for future reference.

warning Avoid high temperature

- Install this unit in a well ventilated, cool, dry, clean place—away from direct sunlight, heat sources, vibration, dust, moisture, and/or cold.
- Avoid installing this unit where foreign objects may fall onto this unit and/or this unit may be exposed to liquid dripping or splashing. On the top of this unit, do NOT place:
 - Other components, as they may cause damage and/or discoloration on the surface of this unit.
 - Burning objects (i.e. candles), as they may cause fire, damage to this unit, and/or personal injury.
 - Containers with liquid in them, as they may fall and liquid may cause electrical shock to the user and/or damage to this unit.
- Do not cover this unit with a newspaper, tablecloth, curtain, etc. in order not to obstruct heat radiation. If the temperature inside this unit rises, it may cause fire, damage to this unit, and/or personal injury.
- Only the voltage specified on this unit must be used. Using this unit with a higher voltage than specified is dangerous and may cause fire, damage to this unit, and/or personal injury. Sabaj will not be held responsible for any damage resulting from use of this unit with a voltage other than that specified.
- Do not attempt to modify or fix this unit. Contact qualified Sabaj service personnel when any service is needed. The cabinet should never be opened for any reason.
- When not planning to use this unit for long periods of time (i. e. when going on vacation), disconnect the power cable from the AC wall outlet.
- Be sure to use the AC adaptor supplied with this unit. Using an AC adaptor other than the one provided may cause fire or damage to this unit.
Install this unit near the wall outlet and where the power cable can be reached easily.
- For added protection for this product during a lightning storm, or when it is left unattended and unused for long periods of time, unplug it from the wall outlet. This will prevent damage to the product due to lightning and power-line surges.

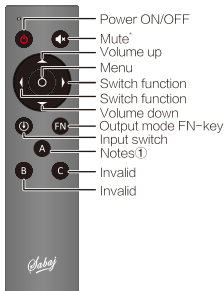
Features

- A4 is a multi-functional power amplifier with up to five kinds of inputs.
- Featured with 24bit USB digital input.
- Using the advanced CSR BT 4.2 bluetooth solution.
- Using high performance DSP+AMP from TI USA.
- Independent headphone drive circuit.
- Subwoofer output.

Specification:

Inputs:	USB/Bluetooth/Optical/Coaxial/Analog(AUX)	
THD+N:	Power AMP	0.04%
	Headphone AMP	0.008%
SNR:	Power AMP	90dB
	Headphone AMP	100dB
USB compatibility:	windows XP/7/8/8.1/10;Mac OS X;Linux	
Bit depth:	24bit	
The highest sampling rate:	USB	96kHz
	Optical,Coaxial	192kHz
Power amplifier output:	80W+80W(4Ω)	
Heahphone amplifier output:	60mW+60mW(32Ω)	
Power Consumption:	50W	
Standby power:	0.5W	

Remote controller

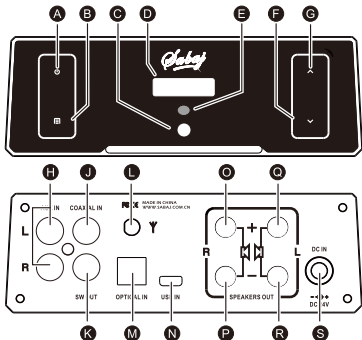


Notes:

① Please press button "A" at first time.

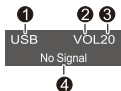
② Press "Mute" button to connect with last bluetooth device when BT input mode is working.

Parts Names



- A** Press and hold button to power on/off.Press the button to switch inputs.
- B** Menu button
- C** 3.5mm output jack
- D** OLED display
- E** IR window
- F** Volume down/function switch
- G** Volume up/function switch
- H** AUX input jacks
- J** Coaxial input jack
- K** Subwoofer output jack
- L** Bluetooth antenna jack
- M** Optical input jack
- N** USB input jack
- O** Right channel output+
- P** Right channel output-
- Q** Left channel output+
- R** Left channel output-
- S** Power input jack
(Voltage range:DC 19-24V)

Home page



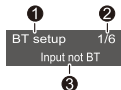
1.Input mode

2.Output mode(When headphone is playing with, it shows .When speaker is playing with,it shows VOL)

3.Volume

4.Sampling rate(When the unit is muted.There will show 'MUTING'. It shows 'No signal' when without input source.)

Menu pages



- 1.Selected menu page
- 2.Current page number
- 3.Menu content

Menus function

- "BT Setup" menu, When A4 is working and connecting with a device but user need to connect with another device, "BT setup" function can fulfill to disconnect with the connected device and back to pairing status. (only workable under bluetooth input.)
- Output mode setting including power amplifier output and headphone output.
- EQ mode setting including BASS, S-BASS, H-ROCK, L-ROCK, JAZZ, COUNTRY, RAP.
- "Bass" gains setting range is level ± 9 .
- "Treble" gains setting ranges is level ± 9 .
- "Dimmer" setting including atmosphere LED dimmer and display off, dimmer setting range get four levels.

Warranty terms

1. The term of service

Shenzhen Sabaj technology Co., LTD promise good quality products. If product is defective unit by normal use with in 7 days after purchasing. The customer can choose to return or repair warranty (does not affect the secondary sales after they can return). Faulty for free with in one year warranty normal use.

2. Date of purchase is in accordance with invoice date or receipt date issued by seller, online shopping can cut trade shots.

3. Following situation can not enjoy "Three Guarantees service"

- a. All damages by human factors, including use it under nonnormal working environment the and not following manual instruction.
- b. User privately disassemble, modification, maintenance.
- c. Use non-designated or approved accessories cause damage.
- d. QC or warranty stickers damage on cabinet.
- e. Can not provide a valid purchasing prove.
- f. Not belong to Sabaj product.

4. How to warranty

This term is only suitable for china mainland, other region please refer to the policy of the local sales agents and national regulations.